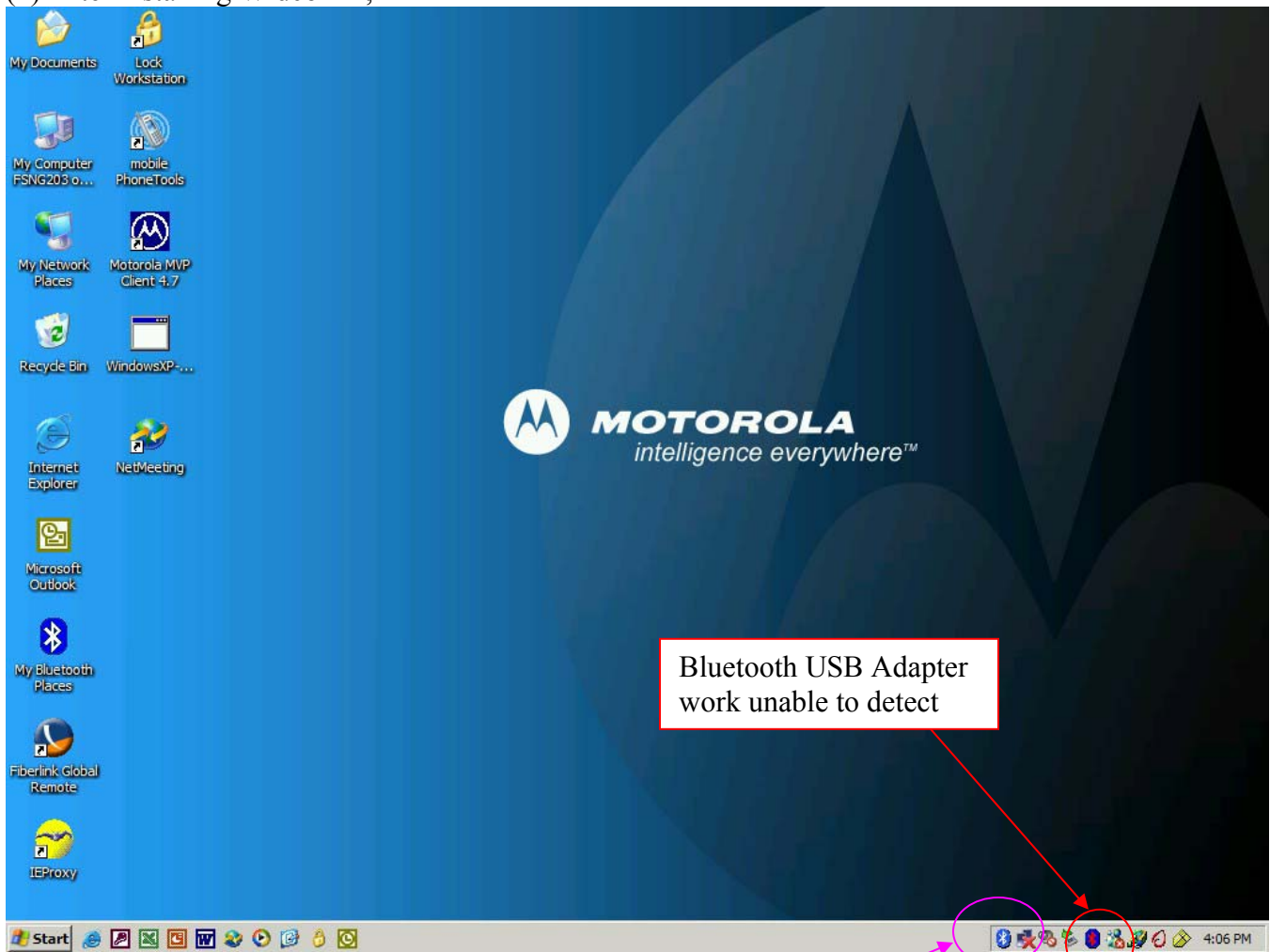


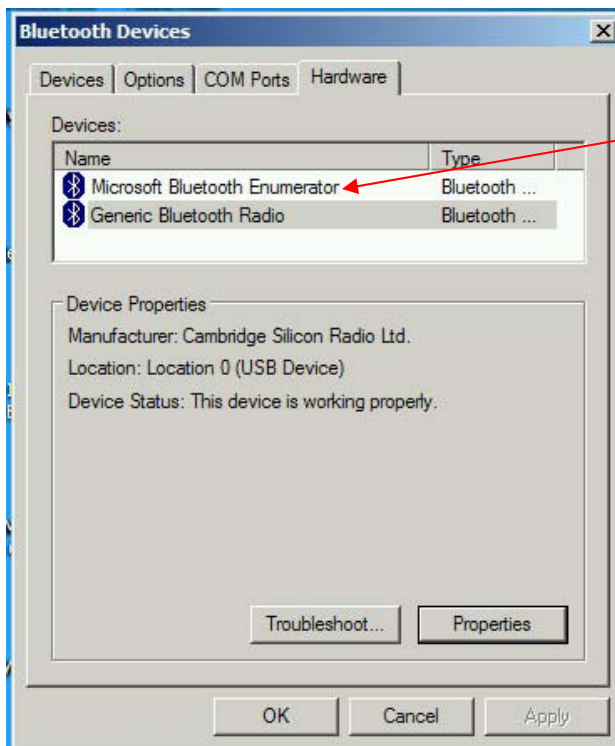
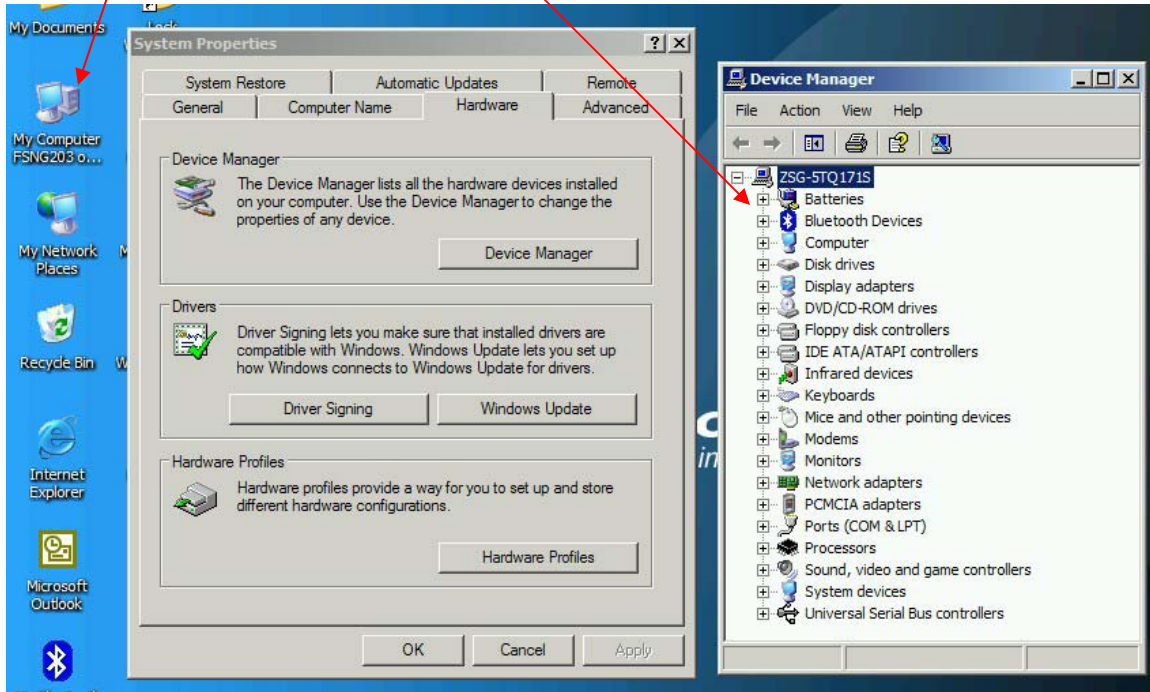
(1) After installing Widcomm,



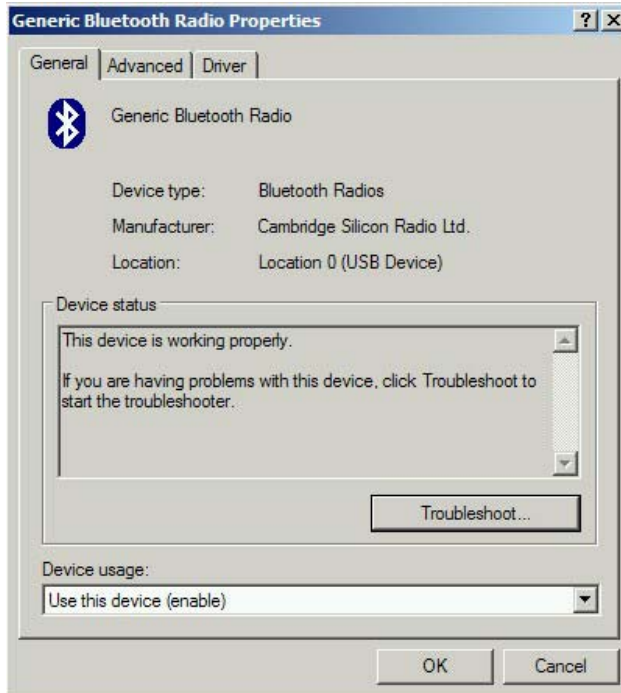
Bluetooth USB Adapter
work unable to detect

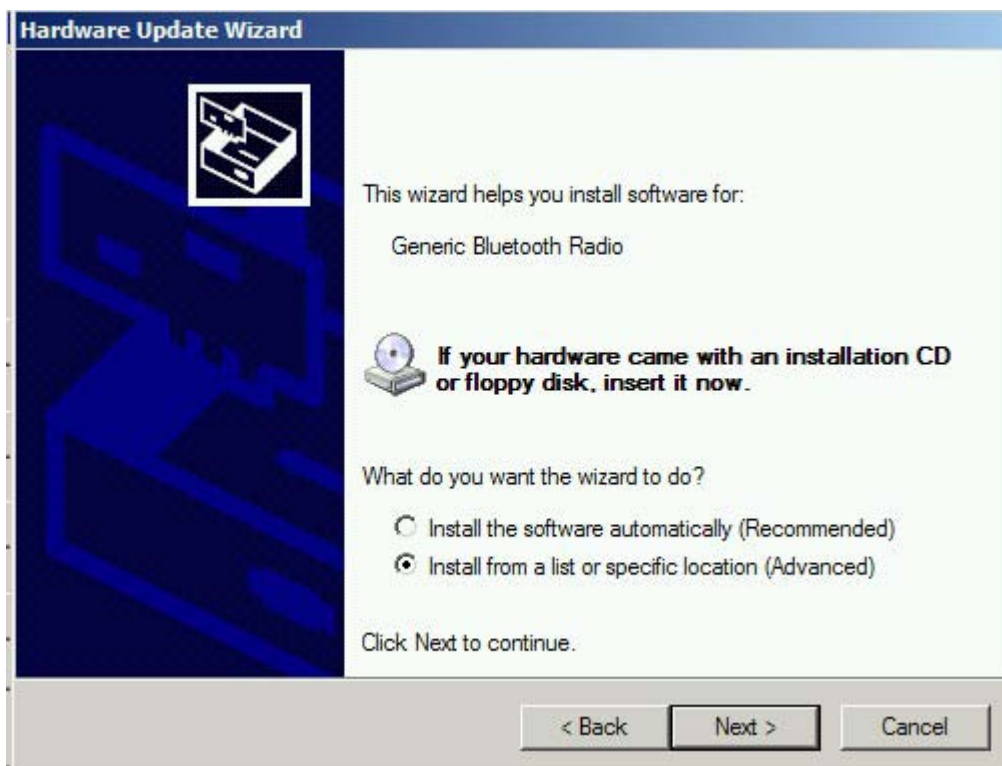
Windows XP Bluetooth Plug
n Play is activated but not
able to use with MPT

Right Click on My Computer and select Properties, from Hardware tab -> Device Manager-> Select Bluetooth Devices




Right Click on Microsoft Bluetooth Enumerator -> Disable





Hardware Update Wizard

Please choose your search and installation options.



☐ Search for the best driver in these locations.

Use the check boxes below to limit or expand the default search, which includes local paths and removable media. The best driver found will be installed.

☒ Search removable media (floppy, CD-ROM,...)

☐ Include this location in the search:

C:\Program Files\mobile PhoneTools

Browse

☒ Don't search. I will choose the driver to install.

Choose this option to select the device driver from a list. Windows does not guarantee that the driver you choose will be the best match for your hardware.


< Back


Next >

Cancel

Hardware Update Wizard

Select the device driver you want to install for this hardware.







Select the manufacturer and model of your hardware device and then click Next. If you have a disk that contains the driver you want to install, click Have Disk.

☒ Show compatible hardware

Model

 Generic Bluetooth Radio

CSR USB Bluetooth Device

 **This driver is not digitally signed!**
[Tell me why driver signing is important](#)

Have Disk...

< Back

Next >

Cancel

